

**Kinch + Shaw Extravaganza!**

We are so excited to see you all. Here are a few helpful notes to help us along the way.

We suggest going to the website for quick reference and helpful links to directions. You are welcome to email us at [info@bkmswed.org](mailto:info@bkmswed.org) with any questions.

**bkmswed.org**

**Saturday May 21st**

The Wedding!  
1180 Old Topanga Canyon Rd.  
Topanga, CA, 90290

4:00 pm - Ceremony

6:00 pm - Feast

10:00 pm - Event ends

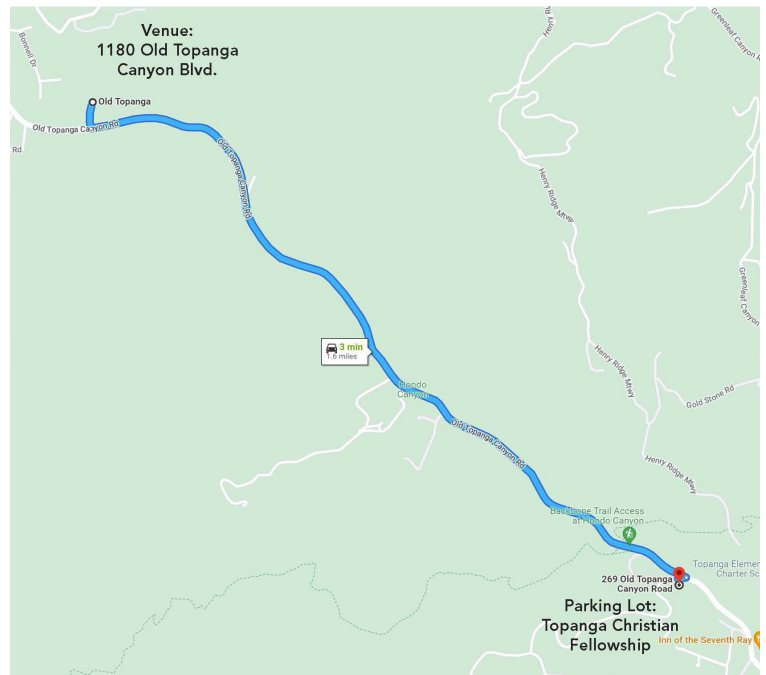
**Suggested Attire:**

Wear what you want! But Greens, mints, sages, emeralds, all the greens are welcome!! This is an outdoor wedding in a mostly grassy area, so prepare for a sunny spring day and chilly evening in the canyon. Hats are encouraged. Big, beautiful hats.

**Parking is available at the Topanga Christian Fellowship:  
269 Old Topanga Canyon Rd,  
Topanga, CA 90290**

Please feel free to drop guests off at the venue then go to the parking lot. We will have a shuttle running back and forth throughout the event.

Ride share is a great idea! Make sure you use the coordinates in the link to the venue on the website vs. the actual address.

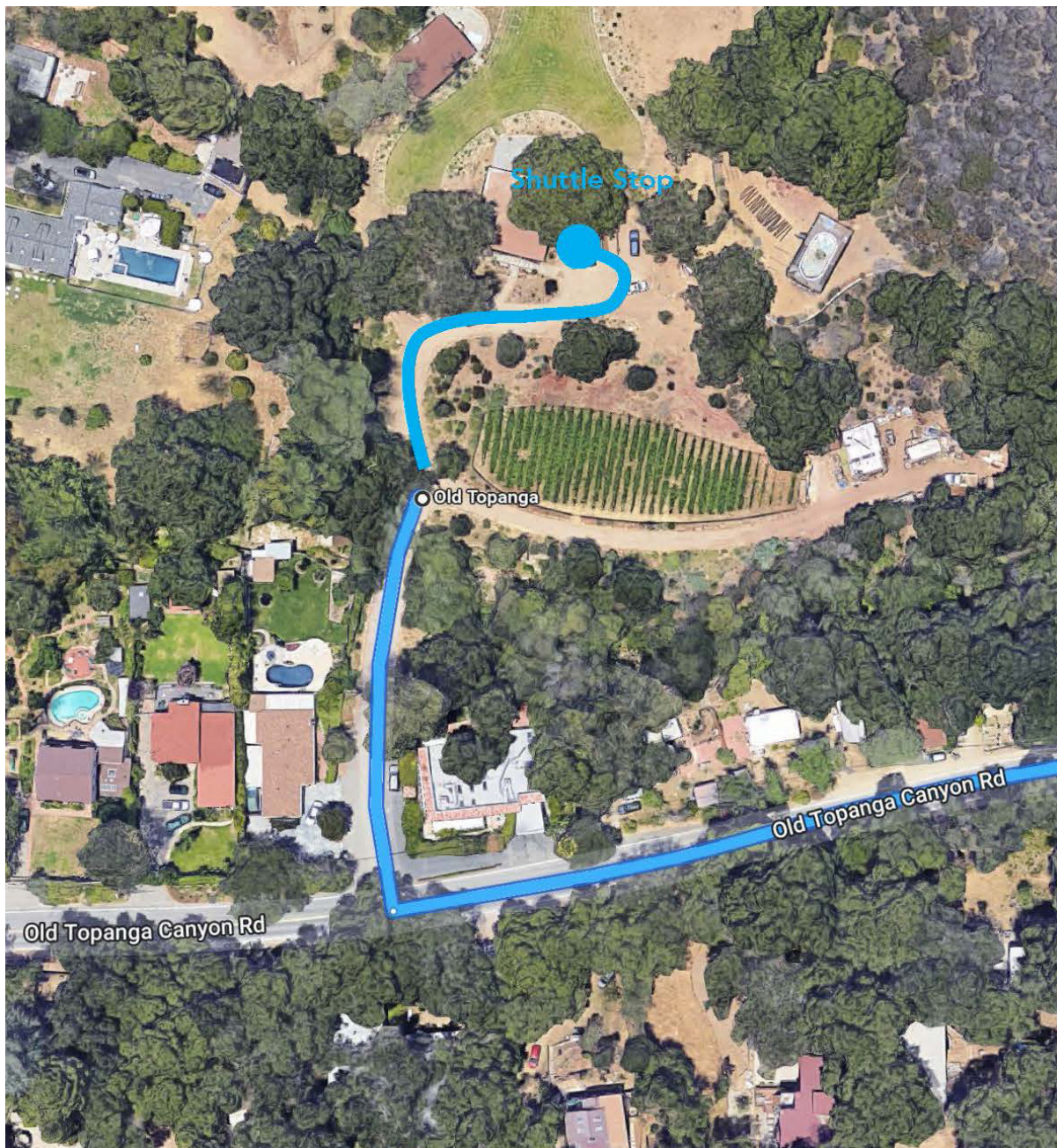


**Venue Drop Off**

1180 Old Topanga Canyon Rd.  
Topanga, CA, 90290

Make sure you use the coordinates in the link to the venue on the website vs. the actual address, as it will send you up Skyline instead.

34°6'17.5"N 118°37'34.3W



**Parking**

269 Old Topanga Canyon Rd,  
Topanga, CA 90290

